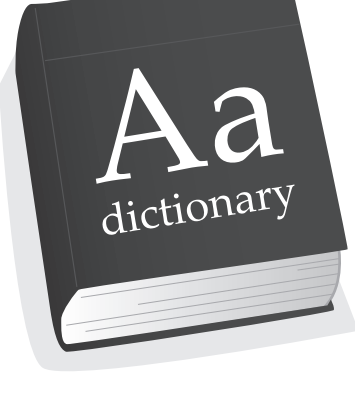


The Need for

# DESIGN AGILITY

Engineers weigh in on **five challenges** that drive the need for **flexible design**



de·sign a·gil·i·ty (dəzīn uh-jil-i-tee)

**noun:**

**a.** the power to make late-stage design changes quickly and easily; nimbleness; flexible changes without sacrificing design intent.

**b.** the ability to rapidly recognize features and patterns in imported models, enabling seamless modifications; design intelligence for dumb models.

**Synonyms:** flexible modeling, direct editing

## 1. Unanticipated Changes:

# 44%

of surveyed users said that on a recent project, they:

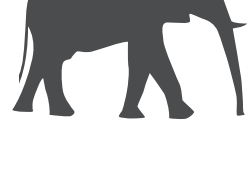
**Experienced** ~~excessive~~  
**Underwent** ~~exorbitant,~~  
**unanticipated**  
~~unexpected~~ changes  
**throughout**   
~~through the~~ development.

## 2. Late Stage Changes:

# 37.9%

of surveyed users said that on a recent project, they experienced dramatic or multiple last-minute changes.

Inbox	Today (4)		
<input type="checkbox"/>	<span style="color: blue;">●</span>	<span style="color: red;">!</span>	Re: Don't hate me!!!
<input type="checkbox"/>	<span style="color: blue;">●</span>	<span style="color: red;">!</span>	Re: Oops, one last thing!!!
<input type="checkbox"/>	<span style="color: blue;">●</span>	<span style="color: red;">!</span>	Re: One last quick change!!
<input type="checkbox"/>	<span style="color: blue;">●</span>	<span style="color: red;">!</span>	Edits Required!



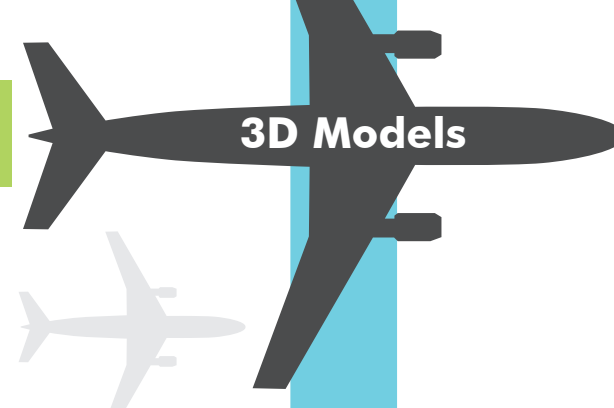
**The elephant in the room:**

1/3 of respondents said that quickly driving late stage changes, especially to a model built by someone else, is difficult using their current 3D CAD software.

## 3. Importing Models:

# 49%

of respondents said **importing** models from other CAD tools is difficult using their current 3D CAD software.



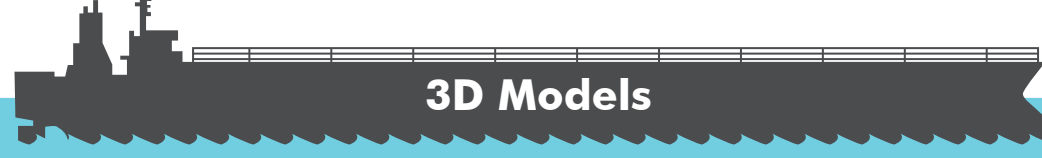
# 59%

of respondents said **modifying** imported models coming from other CAD tools is difficult using their current 3D CAD software.



# 42%

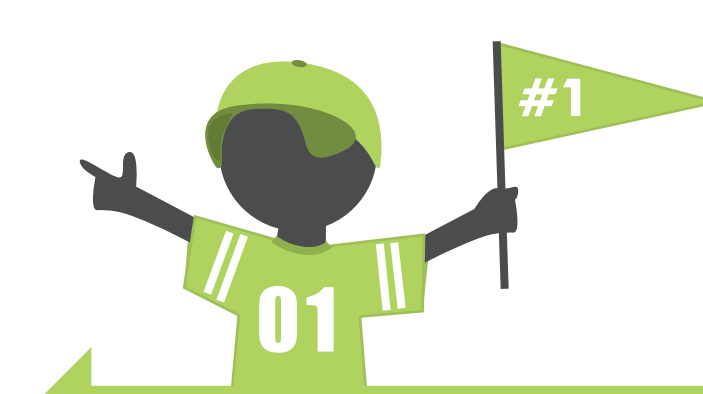
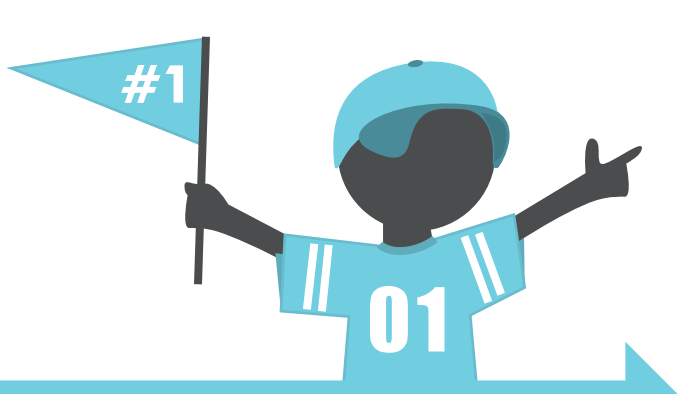
of respondents said intelligently recognizing features and patterns (to make modifications to imported models easier) is difficult using their current 3D CAD software.



## 4. Changing Teams:

# 35.4%

said resources joined or left the development team during the design of a recent product.



## 5. Models from Others :

# 40%

of respondents said that modifying models from others, even if they were created **in the same CAD system**, is difficult using their current software.

## Want to learn more about design agility?

[PTC.com/go/agility](http://PTC.com/go/agility)

© 2012, Parametric Technology Corporation (PTC). All rights reserved. Information described herein is furnished for informational use only, is subject to change without notice, and should not be construed as a guarantee, commitment, condition or offer by PTC. PTC, the PTC logo, Creo, Pro/INTRALINK, Windchill, Windchill PDMLink, Windchill ProjectLink, Pro/ENGINEER and all PTC product names and logos are trademarks or registered trademarks of PTC and/or its subsidiaries in the United States and in other countries. All other product or company names are property of their respective owners. The timing of any product release, including any features or functionality, is subject to change at PTC's discretion.

7518-Creo Design Agility Infographic

# PTC®